



# iHEART

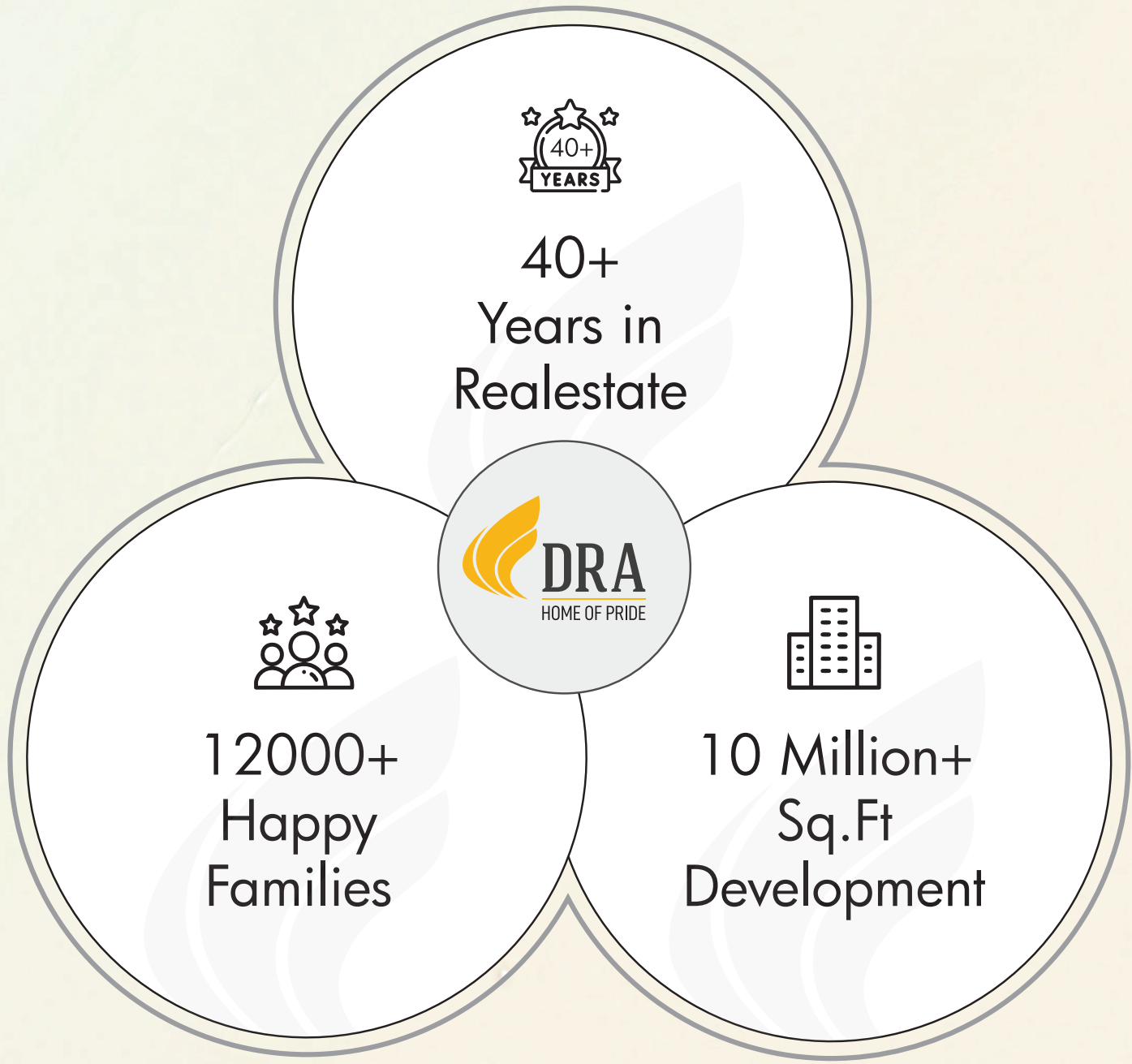
— Bang on OMR,—  
Adj.to Marina Mall, Navalur.

LIVE CONNECTED TO  
THE HEART OF OMR  
@DRA iHEART.





# ABOUT US







# TIMELESS HOMES TIMELY DELIVERY

---

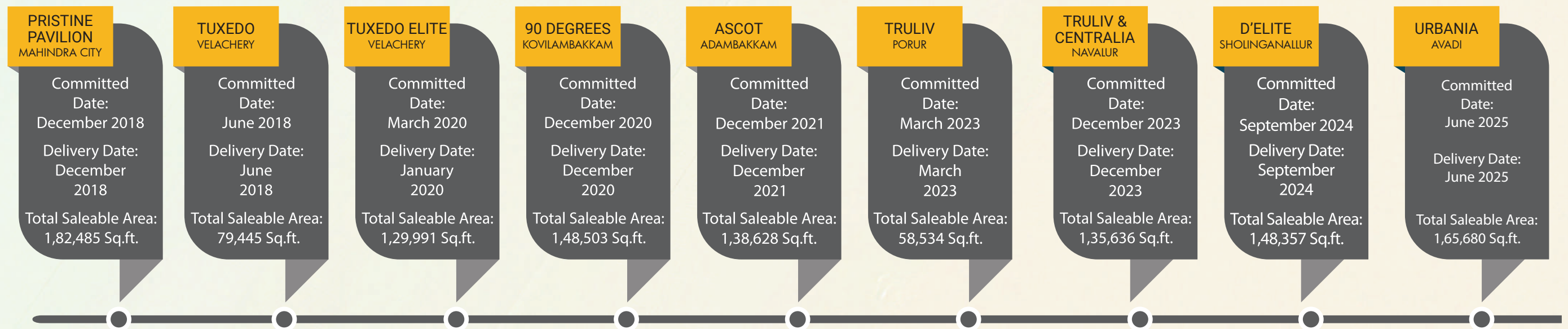




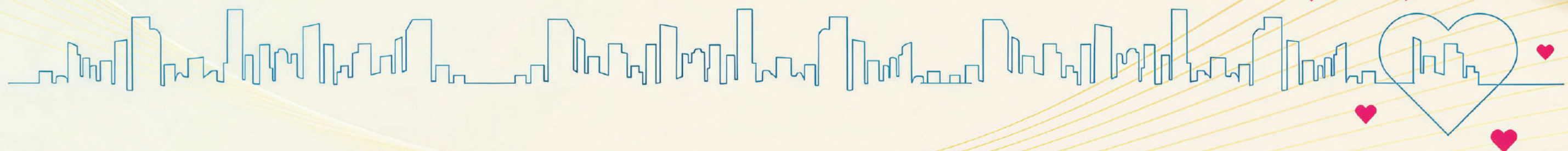
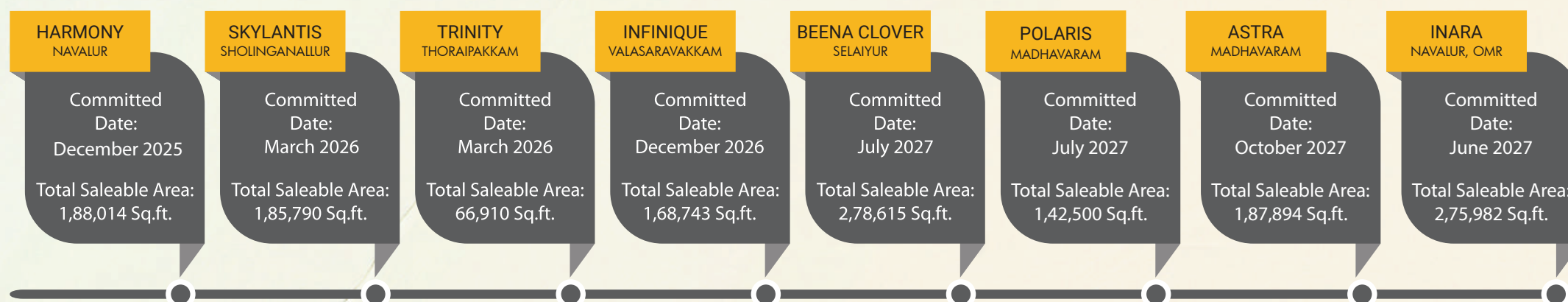


# ON TIME. EVERY TIME

## OUR PAST COMMITMENTS IN CHENNAI



## OUR ONGOING COMMITMENTS IN CHENNAI







DRA

10-07-2025 02:49:07 PM

PROJECT COUNTDOWN

DAY HRS MINS SECS

1086 10 40 02

PROJECT START DATE : 17-08-2025

EST.COMPLETION DATE : 30-08-2028

NEXT MILESTONE

FIRST FLOOR SLAB COMPLETED ON 26.08.2026

SECOND FLOOR SLAB COMPLETED ON 26.09.2026

HAVE A NICE DAY

CHENNAI'S  
FIRST DEVELOPER  
TO DISPLAY  
CONSTRUCTION  
TIMELINE METER  
AT ALL PROJECT  
SITES

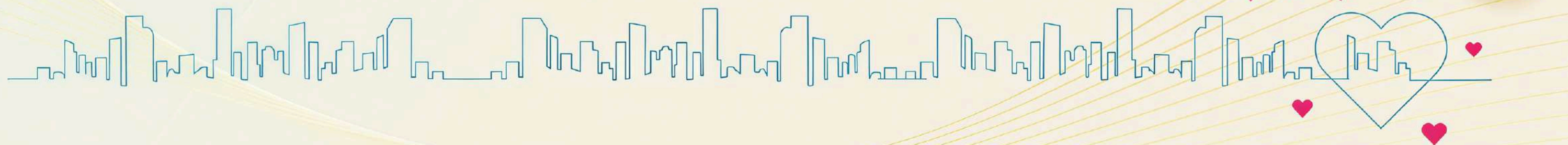
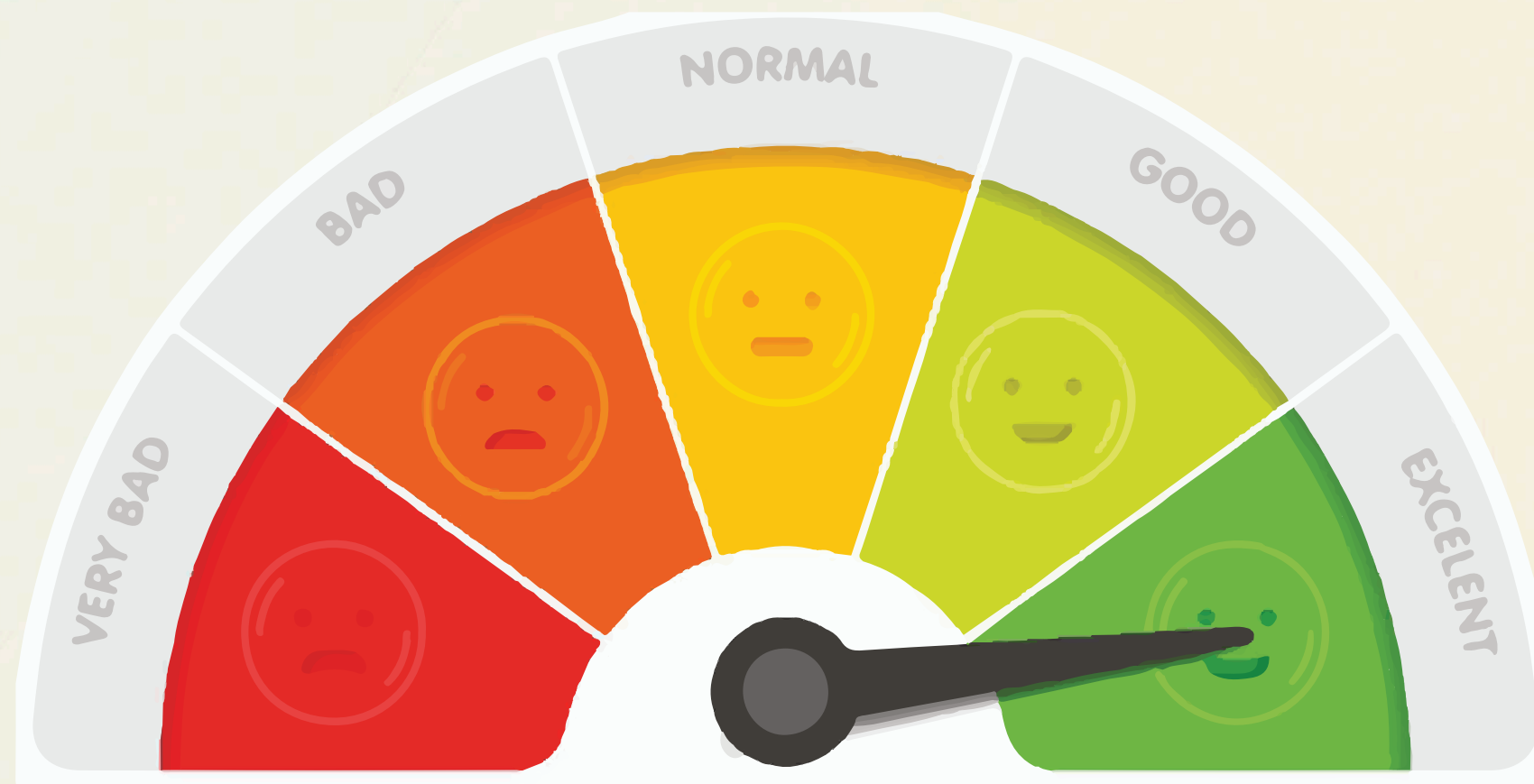






# CHENNAI'S FIRST DEVELOPER TO MEASURE CUSTOMER'S HAPPINESS THROUGH CUSTOMER DELIGHT METER

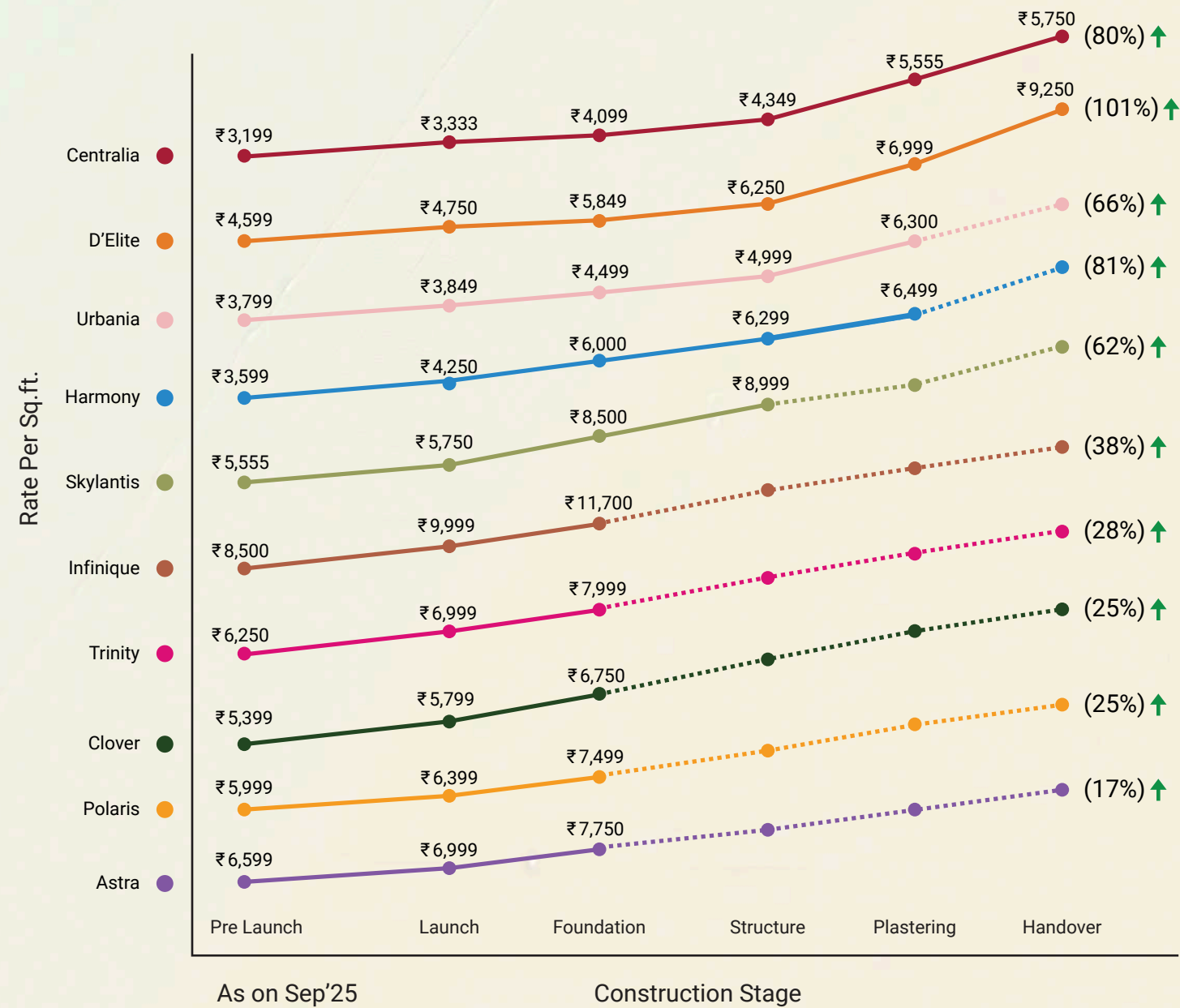
---





# WE CREATE PRUDENT INVESTMENTS THAT APPRECIATE WELL OVER TIME

At DRA, we don't just build homes—we craft investments that grow with time. Each home is designed to create enduring value, offering not just a place to live but a future to thrive. Over the years, our customers have reaped exceptional returns, turning their trust into wealth. With DRA, your dream home is also your smartest financial decision.





SEAMLESS LIVING. **SMARTLY CONNECTED.**



# iHEART

Life on the OMR has a rhythm of its own, fast when you need it, calm when you want it. At DRA iHEART, you're at the heart of it all. Surrounded by tech parks, top schools, cafés, and culture, yet tucked into a thoughtfully designed space that offers peace, privacy and room to grow. It's where expansive living meets everyday convenience, and the good life finds its natural pace.

**WELCOME TO iHEART. FEEL THE PULSE OF OMR,  
IN THE COMFORT OF YOUR HOME.**



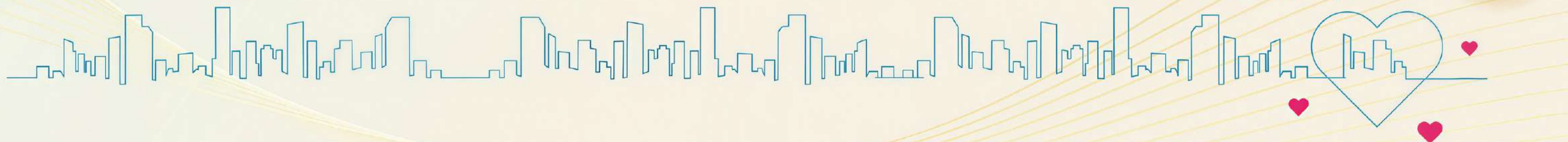




## PROJECT OVERVIEW

---

Land Extent.....3.42 Acres  
Location .....Bang on OMR at Navalur  
Total Saleable Area .....5,81,837 Sq.ft  
No of Units .....271 Units  
4 BHKs (With Maid Room) – 90 Nos  
3 BHKs (With Maid Room) – 18 Nos  
3 BHKs – 163 Nos  
Structure.....Basement + Stilt + 19 Floors  
Unit Type.....Lifestyle 3 & 4 BHK Sea View Homes  
Sizes Ranging From .....1595 - 2927 Sq.ft.  
Handover.....Aug'28







# Why DRA iHeart?



Located Bang on OMR  
(Opp.SIPCOT IT Park)



Walkable Distance  
To Marina Mall



Walkable Distance  
To Metro Station



IGBC Pre-Gold  
Certified Green Homes



Homes  
With Sea Views



Homes with  
Three Sides Ventilation



No Opposite  
Door Facing Homes



100% Vaastu  
Compliant Homes



Homes with High End  
Specifications



Luxury  
Amenities





















# List of Amenities & Features

---



## Stilt Level

- Grand Entrance Plaza
- Grand Double Height Lobby
- Association Room
- Practice Basketball Court
- Seniors Zone
- Wall Climbing Play
- Practice Cricket Pitch
- Pickle Ball
- Children's park





# List of Amenities & Features

---



## Indoor Amenities

- Indoor Games
  - Dart
  - Carrom
  - Foosball
  - Board Games
  - Snooker
- Home Theatre
- Gymnasium
- Business Centre
  - PlayStation Lounge
  - Co-working Zone
  - Conference Room
  - Casual Lounge
- Zumba & Yoga Studio
- Banquet Hall





# List of Amenities & Features

---



## Outdoor Amenities

- Swimming Pool
- Open-Air Theatre
- Party Deck & BBQ Counter
- Al Fresco Dining
- Multi-Functional Seating
- Outdoor Gym
- Tot Lot
- Senior Seating Zone
- Outdoor Board Games
- Work Nook





## Location & Landmarks

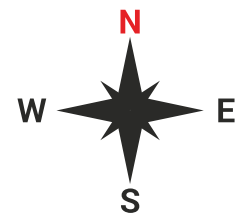
Bang on Main Road – Reach any part of the city easily



[maps.app.goo.gl/52xpjbgJ6hH6cRof8](https://maps.app.goo.gl/52xpjbgJ6hH6cRof8)



# Master Plan





# Typical Floor Plan - 3<sup>rd</sup> to 18<sup>th</sup> Floor



3BHK+3T (301-1801)  
SBA - 1827 sq.ft.  
East Facing

3BHK+3T (302-1802)  
SBA - 1895 sq.ft.  
East Facing

3BHK+3T (303-1803)  
SBA - 1895 sq.ft.  
East Facing

3BHK+3T (304-1804)  
SBA - 1895 sq.ft.  
East Facing

3BHK+3T (305-1805)  
SBA - 1895 sq.ft.  
East Facing

3BHK+3T+MR (306-1806)  
SBA - 2032 sq.ft.  
East Facing

4BHK+4T+MR (307-1807)  
SBA - 2868 sq.ft.  
North Facing



3BHK+3T (315-1815)  
SBA - 1610 sq.ft.  
North Facing

3BHK+3T (314-1814)  
SBA - 1595 sq.ft.  
North Facing

3BHK+3T (313-1813)  
SBA - 1595 sq.ft.  
North Facing

3BHK+3T (312-1812)  
SBA - 1595 sq.ft.  
North Facing

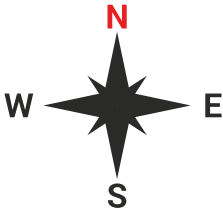


4BHK+4T+MR (311-1811)  
SBA - 2868 sq.ft.  
East Facing

4BHK+4T+MR (310-1810)  
SBA - 2927 sq.ft.  
East Facing

4BHK+4T+MR (308-1808)  
SBA - 2885 sq.ft.  
North Facing

4BHK+4T+MR (309-1809)  
SBA - 2855 sq.ft.  
North Facing





19<sup>th</sup> Floor plan



3BHK+3T (1901)  
SBA - 1827 sq.ft.  
East Facing

3BHK+3T (1902)  
SBA - 1895 sq.ft.  
East Facing

3BHK+3T (1903)  
SBA - 1895 sq.ft.  
East Facing



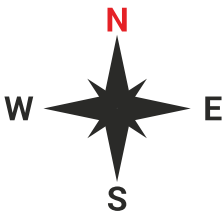
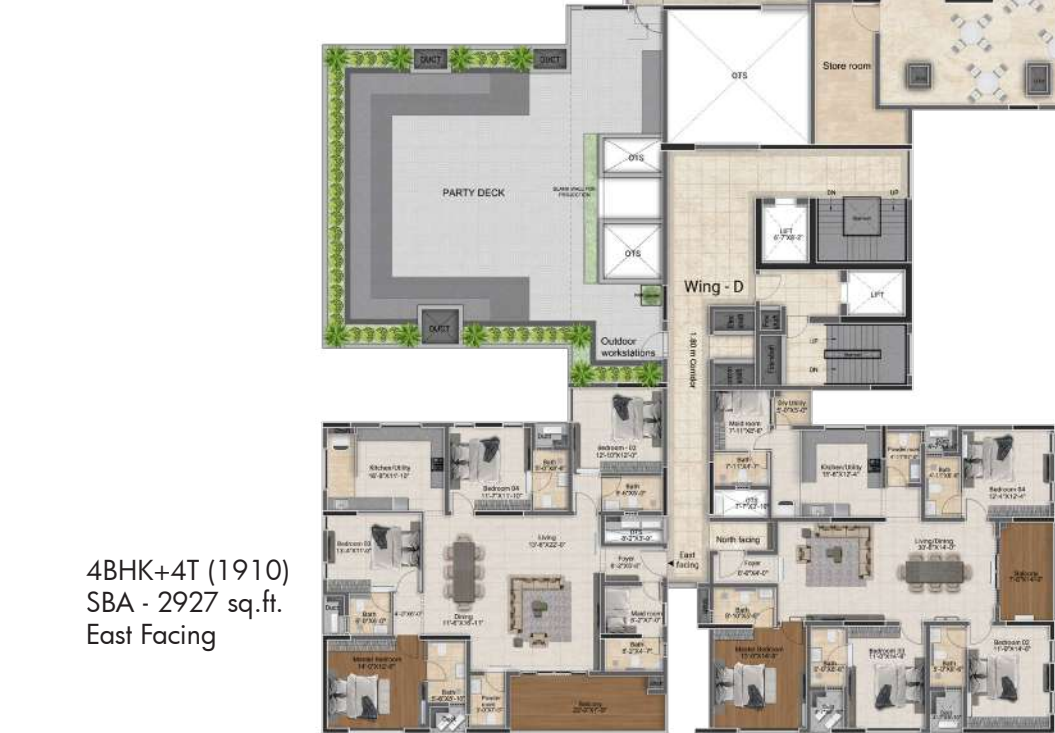
3BHK+3T (1915)  
SBA - 1610 sq.ft.  
North Facing

\*Amenities

- 1. Co-Working Space
- 2. Zumba & Yoga
- 3. GYM
- 4. Infinity Swimming Pool
- 5. Multi-Purpose Hall
- 6. Party Deck
- 7. Muti Use Terrace
- 8. Indoor Games
- 9. Home Theatre

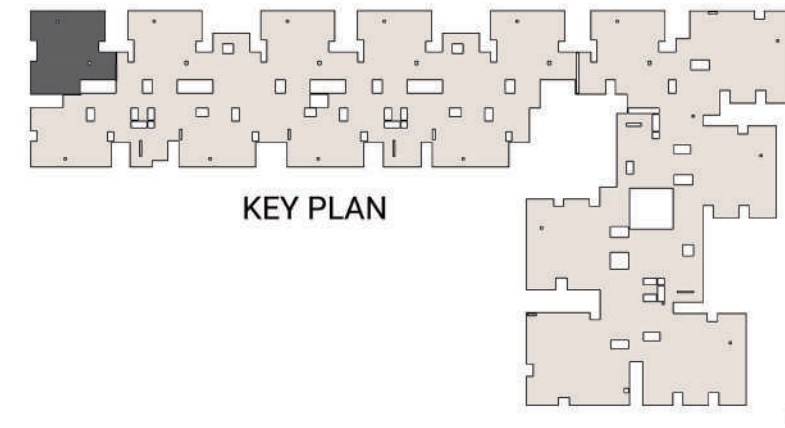
4BHK+4T (1910)  
SBA - 2927 sq.ft.  
East Facing

4BHK+4T (1909)  
SBA - 2855 sq.ft.  
North Facing

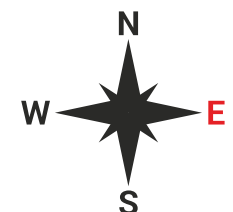




# Individual Unit Plan (3 BHK+3T - 1827 Sq.ft.)

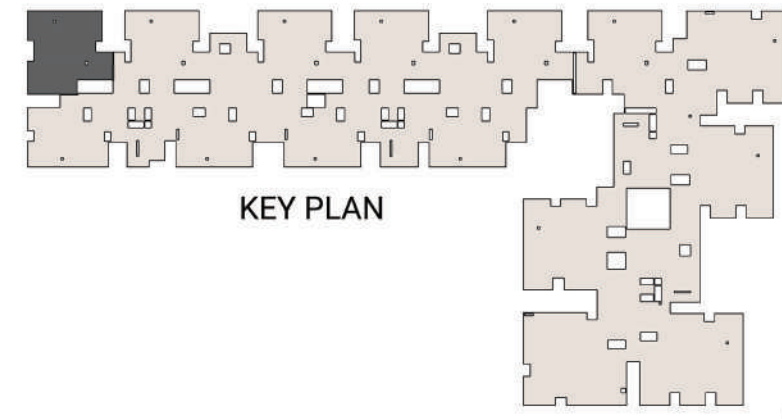


Unit Nos.	Apartment Type	Saleable Area	Carpet Area	UDS	Facing
301-1801	3 BHK+3T	1827 Sq.ft.	1133 Sq.ft.	320	East

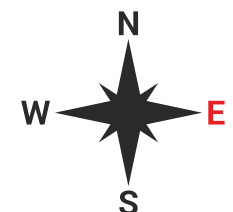




# Individual Unit Plan (3 BHK+3T - 1827 Sq.ft.)

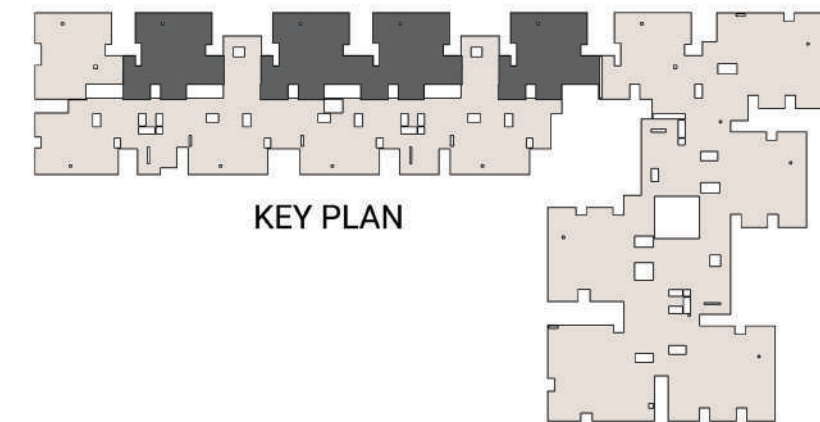


Unit Nos.	Apartment Type	Saleable Area	Carpet Area	UDS	Facing
1901	3 BHK+3T	1827 Sq.ft.	1133 Sq.ft.	319	East

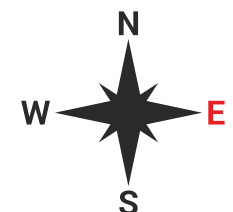




# Individual Unit Plan (3 BHK+3T - 1895 Sq.ft.)



Unit Nos.	Apartment Type	Saleable Area	Carpet Area	UDS	Facing
302-1902, 303-1903 304-1804, 305-1805	3 BHK+3T	1895 Sq.ft.	1175 Sq.ft.	331 Sq.ft	East

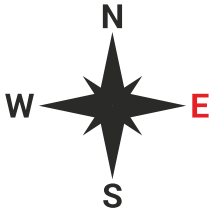




Individual Unit Plan (3 BHK+3T+MR - 2032 Sq.ft.)

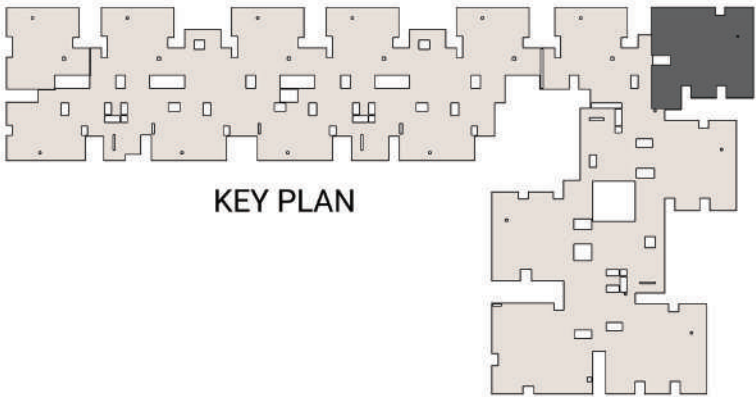


Unit Nos.	Apartment Type	Saleable Area	Carpet Area	UDS	Facing
306-1806	3 BHK+3T+MR	2032 Sq.ft.	1260 Sq.ft.	355 Sq.ft	East

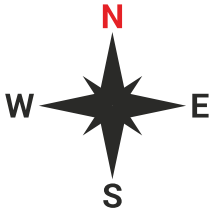




Individual Unit Plan (4 BHK+4T+MR - 2868 Sq.ft.)

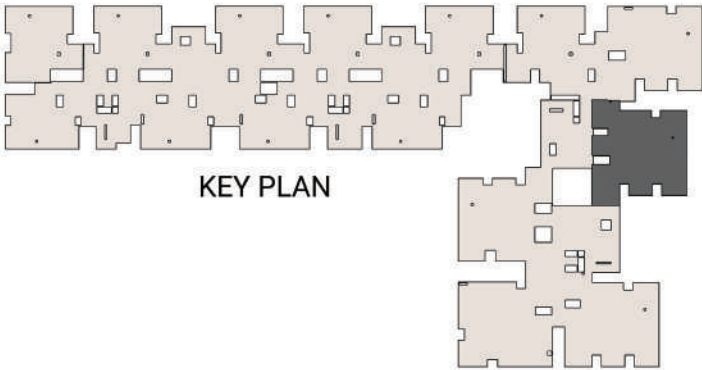


Unit Nos.	Apartment Type	Saleable Area	Carpet Area	UDS	Facing
307-1807	4 BHK + 4T+MR	2868 Sq.ft.	1778 Sq.ft.	501 Sq.ft	North

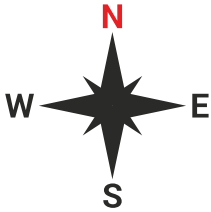




# Individual Unit Plan (4 BHK+4T+MR - 2885 Sq.ft.)

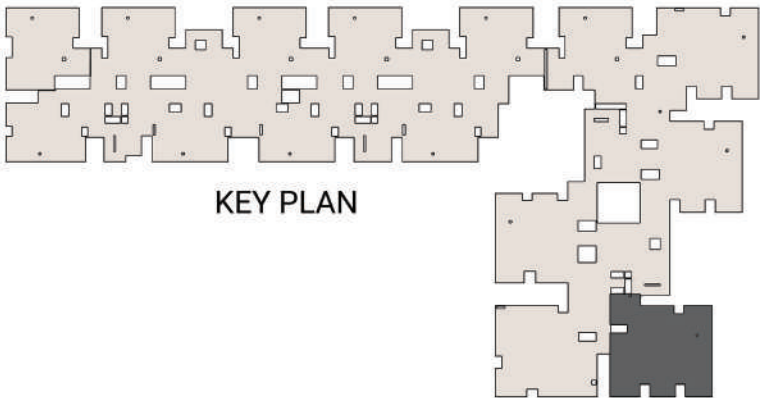


Unit Nos.	Apartment Type	Saleable Area	Carpet Area	UDS	Facing
308-1808	4 BHK + 4T+MR	2885 Sq.ft.	1789 Sq.ft.	504 Sq.ft	North

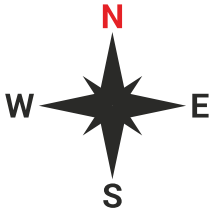




# Individual Unit Plan (4 BHK+4T+MR - 2855 Sq.ft.)

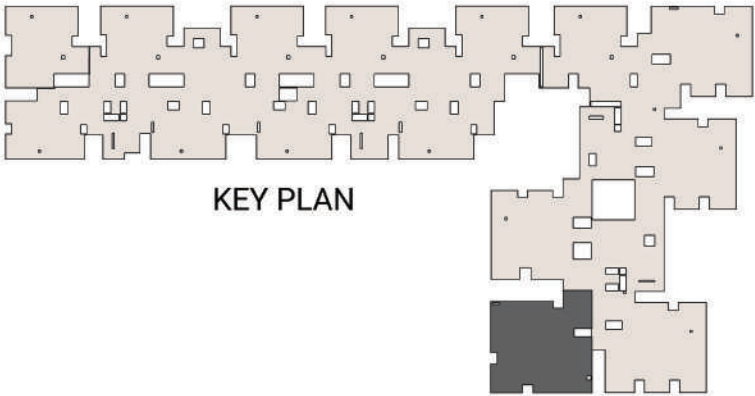


Unit Nos.	Apartment Type	Saleable Area	Carpet Area	UDS	Facing
309-1909	4 BHK + 4T+MR	2855 Sq.ft.	1770 Sq.ft.	499 Sq.ft	North

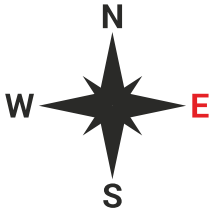




# Individual Unit Plan (4 BHK+4T+MR - 2927 Sq.ft.)

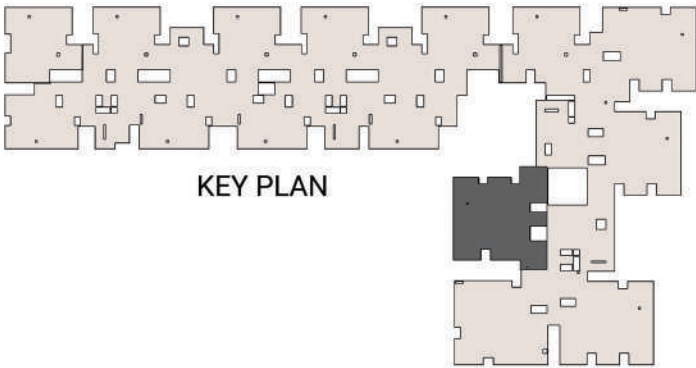


Unit Nos.	Apartment Type	Saleable Area	Carpet Area	UDS	Facing
310-1910	4 BHK +4T+MR	2927 Sq.ft.	1815 Sq.ft.	512 Sq.ft	East





# Individual Unit Plan (4 BHK+4T+MR - 2868 Sq.ft.)



Unit Nos.	Apartment Type	Saleable Area	Carpet Area	UDS	Facing
311-1811	4 BHK +4T+MR	2868 Sq.ft.	1778 Sq.ft.	502 Sq.ft	East

